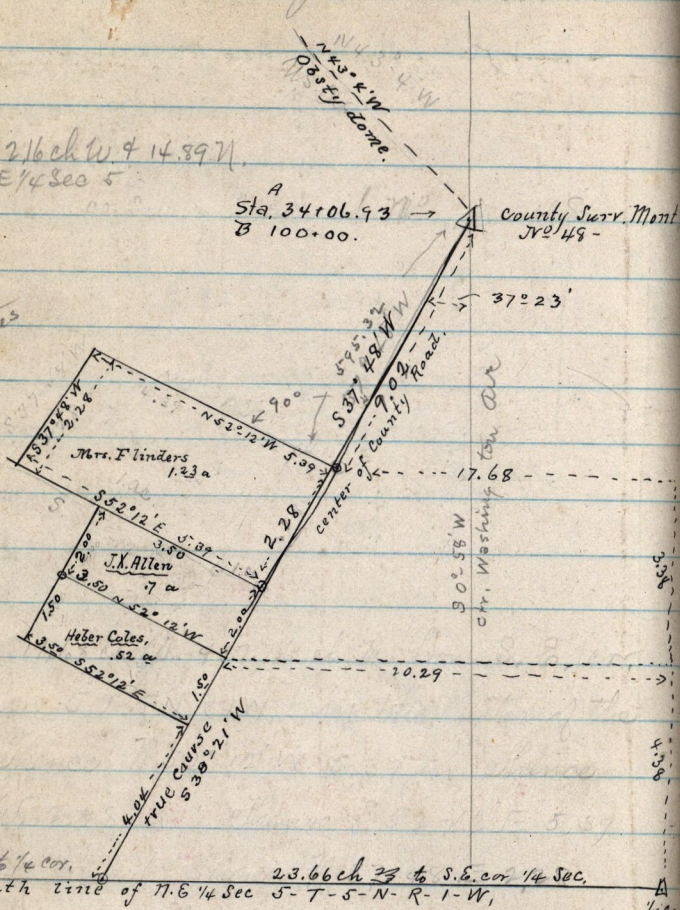


Survey for Furniss

June 12 - 1885

Situated 12 1/4 ch W & 14.89 N.
 from S.E. cor. NE 1/4 Sec 5
 T-5-N-R-1-W

See Book
 I-109.93
 Field notes



The deed from Isaac Furniss to Mrs. Flinders, Begs. 17.68 ch. N. and 7.76 ch. N. from
 S.E. cor. of N.E. 1/4 Sec. 5-T-5-N-R-1-W. Thence N. 52° 12' W, 5.39 ch, S 37° 48' W 2.28
 ch, S 52° 12' E 5.39 ch, to center of St, N 37° 48' E 2.28 ch to Crp. 1.23 a including
 a part of said St. - Surveyed June 12-1885-